

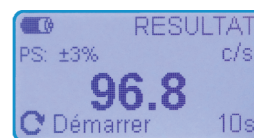
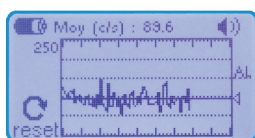
# Poly-radiometer ICTO



## Poly-radiometer ICTO

*Multiple display and customizable counting scales features*

- Sturdy, self-contained
- The coefficient of every unit is ajustable to adapt with all kinds of probes
- Appropriate device for the detection and the measurement of surface contamination



 Carmelec



## Technical characteristics



### Display characteristics

Display unit :	c/s, Bq, Bq/cm <sup>2</sup> , $\mu$ Sv/h
Display range:	Between 0,0001 and 99 999 999
Measurement range :	Between 0,017 and 250 000 c/s
Integration time:	From 1 s to 60 s



### Electrical characteristics:

Power supply:	18 V DC 800 mA
Battery-life:	From 50 h to 8 h depending on the kind of probe connected



### Mechanical and environmental characteristics:

Dimensions:	243 x 140 x 75 mm
Weight:	1000 g (excluding power supply)

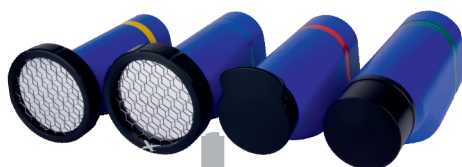
## Application & use

ICTO is a sturdy, self-contained, appropriate device for the detection and the measurement of surface contamination during dismantlement operations and source control. The coefficient of every unit is adjustable to adapt with all kinds of probes.

## Options

### PMI probes:

Alpha : SAI, Beta : SBI, X : SXI, Gamma : SGI



### Low-energy beta probe:

SBMI-15

